

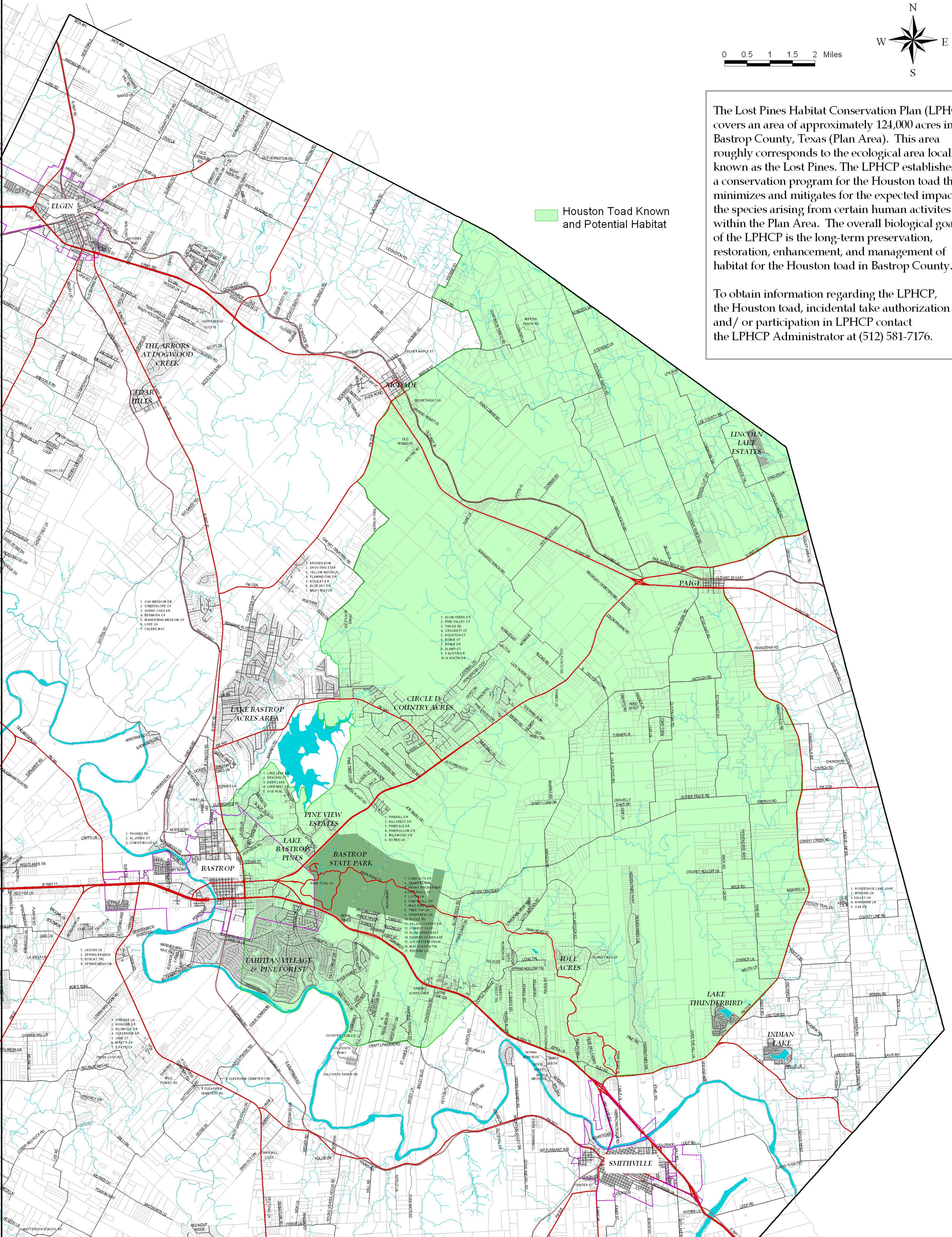
# LOST PINES HABITAT CONSERVATION PLAN AREA BASTROP COUNTY, TEXAS



The Lost Pines Habitat Conservation Plan (LPHCP) covers an area of approximately 124,000 acres in Bastrop County, Texas (Plan Area). This area roughly corresponds to the ecological area locally known as the Lost Pines. The LPHCP establishes a conservation program for the Houston toad that minimizes and mitigates for the expected impacts to the species arising from certain human activities within the Plan Area. The overall biological goal of the LPHCP is the long-term preservation, restoration, enhancement, and management of habitat for the Houston toad in Bastrop County.

To obtain information regarding the LPHCP, the Houston toad, incidental take authorization and/ or participation in LPHCP contact the LPHCP Administrator at (512) 581-7176.

 Houston Toad Known and Potential Habitat



DISCLAIMER: BASTROP COUNTY PROVIDES THIS MAP "AS IS" AND ASSUMES NO LIABILITY FOR ITS COMPLETENESS OR ACCURACY. THIS IS INTENDED AS A GENERAL REPRESENTATION ONLY AND IS IN NO WAY INTENDED TO BE USED AS SURVEY GRADE INFORMATION.